

# SPEC SHEET + MEASUREMENTS



## Nike Women's Gym Vintage Full-Zip Hoodie. CN9402

### Product photo



This hoodie has an old-school gym look with new-school style.

- 4.7-ounce, 60/40 organically, sustainably-grown cotton/ recycled polyester
- Oversized, three-panel hood with drawcords
- Front pouch pockets
- Open cuffs
- Contrast heat transfer Swoosh logo on right chest

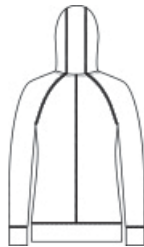
### CARE INSTRUCTIONS

Machine Wash Cold (30c). Wash Inside Out. Wash with Like Colors. Do Not Use Softeners. Do Not Use Bleach. Tumble Dry Low. Do Not Iron. Do Not Dry Clean.

### Sketches



front



back

# SPEC SHEET + MEASUREMENTS



## Nike Women's Gym Vintage Full-Zip Hoodie. CN9402

### PRODUCT MEASUREMENTS

	S	M	L	XL	2XL
Size	4/6	8/10	12/14	16/18	20/22
Body Length at Back	22	22 1/4	23 1/4	24	24 3/4
Bust	20 7/8	22 1/4	23 5/8	25 1/2	27 1/2
Sleeve Length from Center Back	32 7/8	33 3/8	33 7/8	34 1/2	35 1/8

**Body Length at Back:** Measured from high point shoulder to finished hem at back.

**Bust:** Measured across the chest one inch below armhole when laid flat.

**Sleeve Length from Center Back:** Measure from Center Back neck to shoulder point to sleeve hem.

### SIZE CHARTS

	S	M	L	XL	2XL
Size	4/6	8/10	12/14	16/18	20/22
Bust	32 1/2-35 1/2	35 1/2 - 38	38-41	41-44 1/2	44 1/2 - 48 1/2

# SPEC SHEET + MEASUREMENTS



Nike Women's Gym Vintage Full-Zip Hoodie. CN9402

## HOW TO MEASURE

---



### **BUST**

Measure under the arm and around the fullest part of the bust with arms down, keeping tape horizontal.

## COLORS

---



Team  
Anthracite  
PMS 7540C



Team Black  
PMS BLACK  
C



Team Navy  
PMS 533C



Team Royal  
PMS 7687C